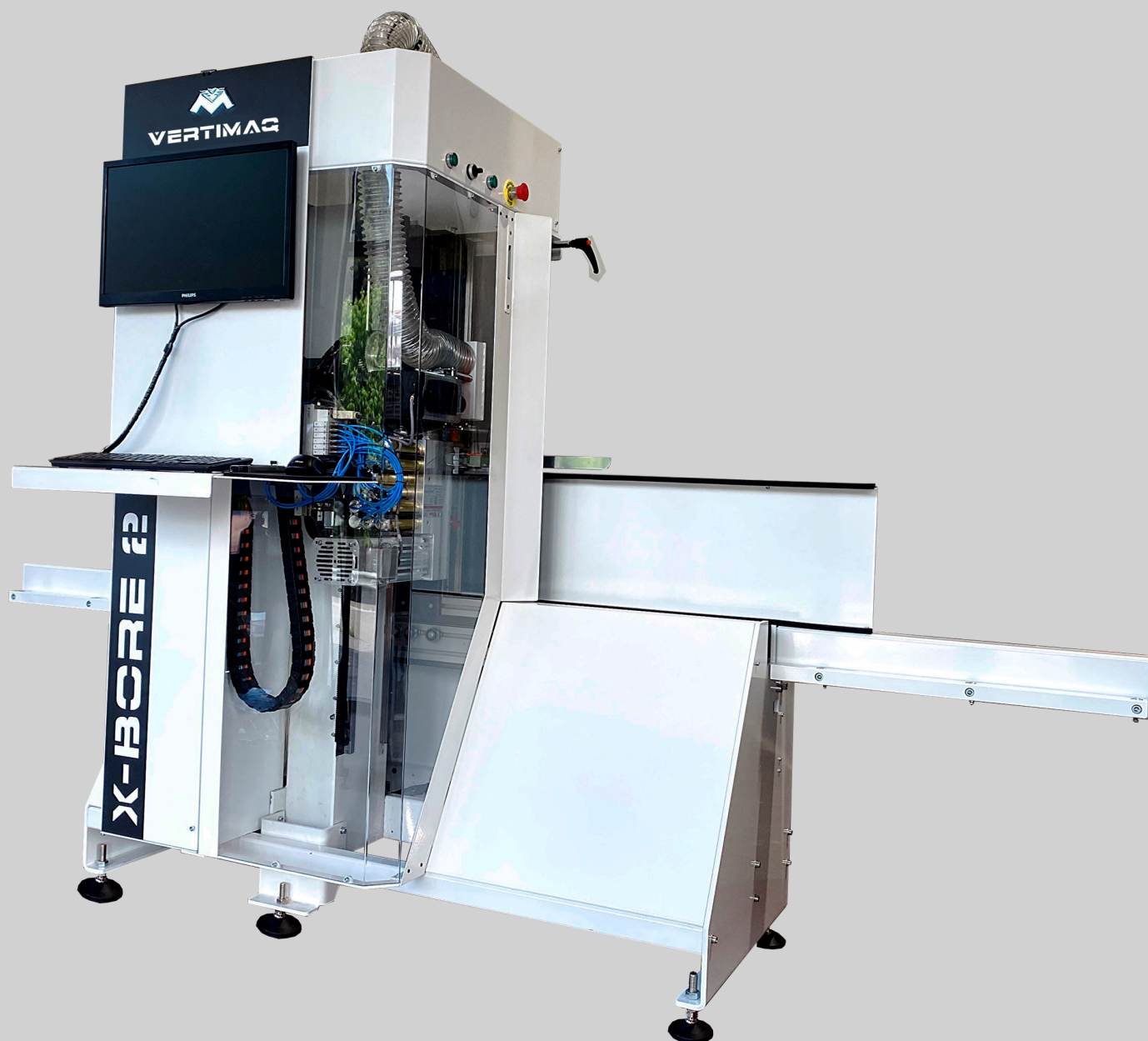




X-BORE2

"Technology cnc for everyone"



Vertical Concept

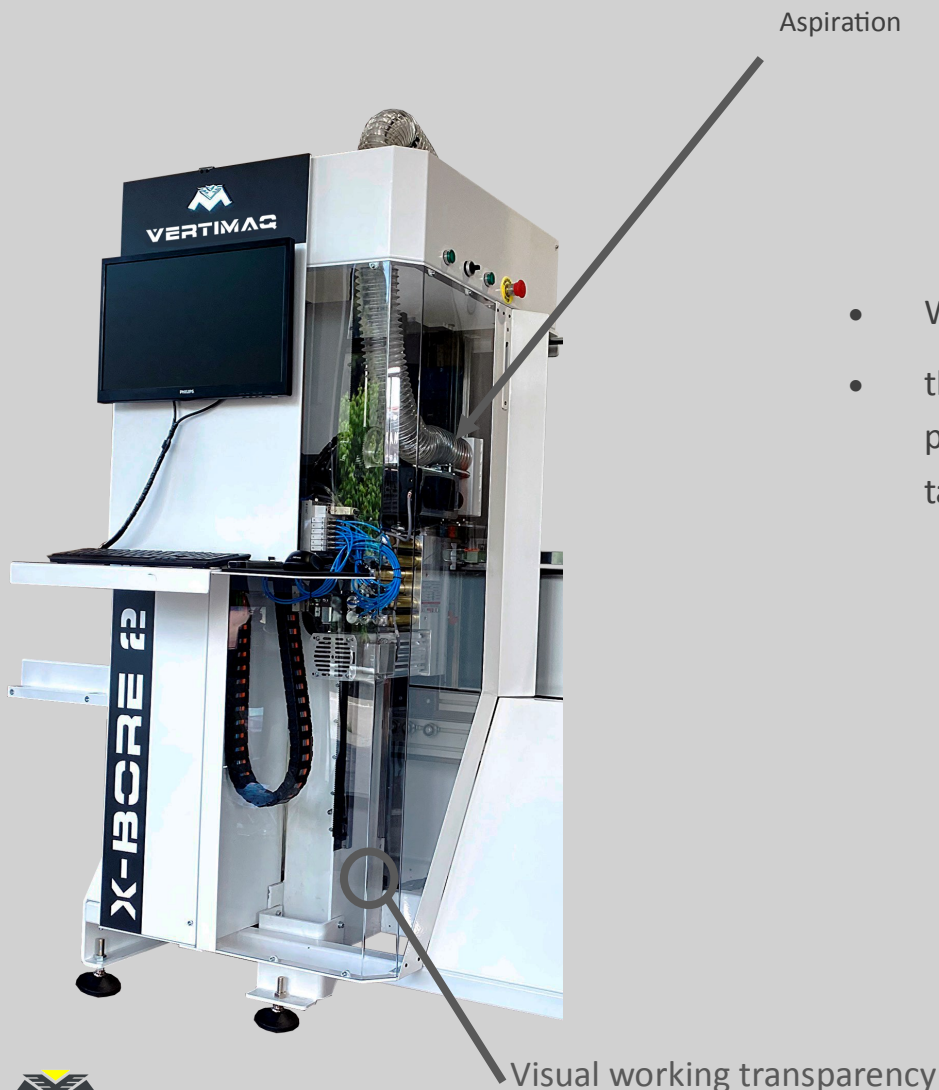
They are all advantages for your business
"Technology cnc for everyone"

The vertical machine occupies the least space possible, it is a record to have a cnc drill center in just 2m² of your workshop

The piece to be machined always rests on one of the edges, all its weight resides in that part, the special plastic table, only acts as a guide in the movement, thus avoiding scratches in its surface finish, so that the exposed part of the furniture does not suffer friction.

Thanks to the force of gravity, the part is always kept in contact with the bearing base, the zero point of all measurements, it does not need an adjustable clamp, avoiding time loss in adjusting the machine for each part, as occurs in systems horizontal.

All the dust generated by the perforations falls by gravity and goes directly to the suction inlet at the base of the machine.

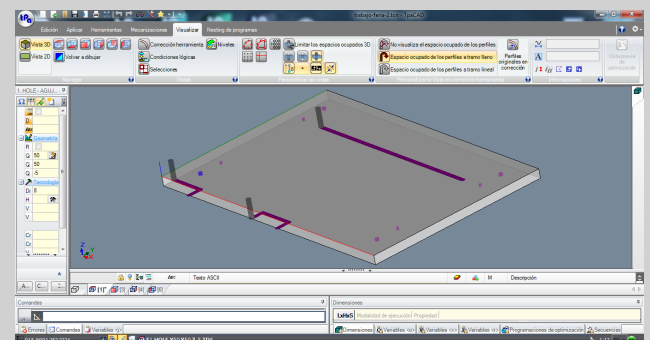
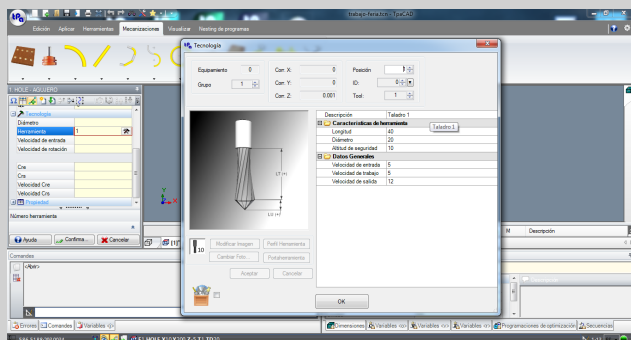
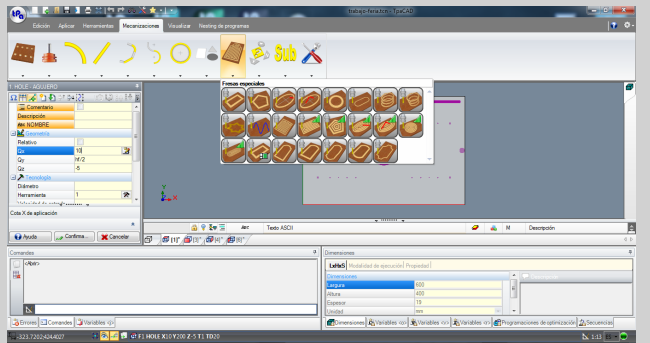
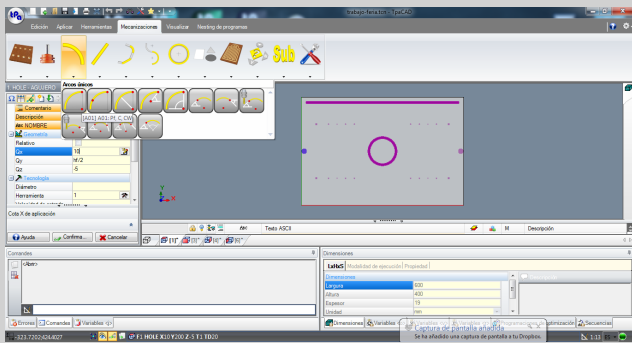
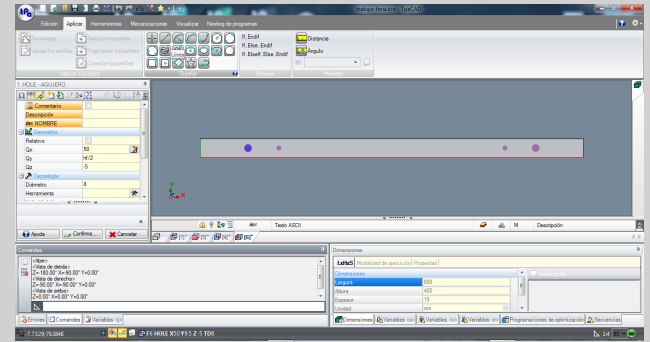
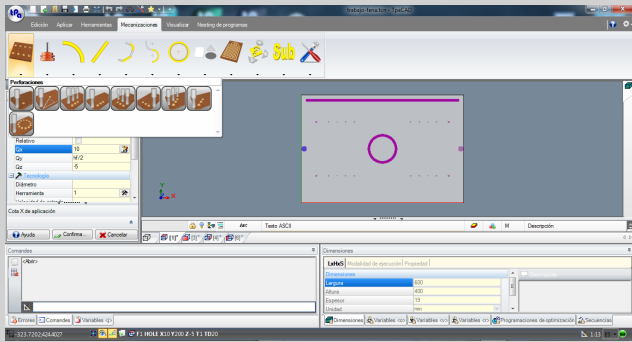


- Weight supported on the edge.
- the surface of the part is not exposed to scratches as in horizontal systems.



Software

TPA Cad software, could be one of the most intuitive software of the market, easy to use, fast and flexible. You can use it in the machine pc, or in your desk pc, so the unit can drill pieces while you are designing comfortably in your office. The new files could be saved in a pendrive or sended directly via wifi to the machine. The software has the possibility to print barcodes labels, and read the codes with a pistol



After filled the blanks with the measures information for the specific macro, the design is generated immediately, so simple like that!

M


VERTIMAQ

Exclusive "mirrored part" machining system
one right side enters through the N field
the left side enters through the M field
a single program and with a single click !

X-BORE

**XBORE2, the new Vertimaq cnc drill center,
provides the artisan with the latest technology.
Absolutely compact, easy to use and totally flexible
Drills, grooves, mills, cuts... everything you need
to make furniture, and all that in just two square
meters of your workshop!**

N



THE BORING HEAD UNIT



6 front holes spaced 32mm apart for multi-drillings

- 4 of the holes are distributed vertically (Y-direction)

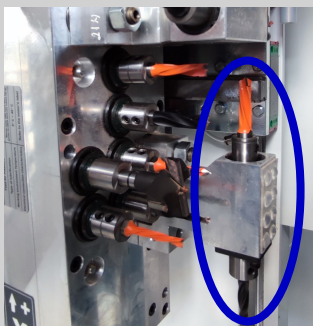
- 4 of the holes are distributed horizontally (X-direction)

(2 of the holes are shared in X and Y direction).

In this way we can perform several combinations of machining operations at the same time, e.g.

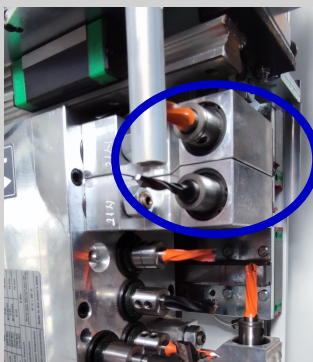
combinations at the same time, e.g. racks more quickly.

more quickly



1+1 Horizontal Y-axis drill hole

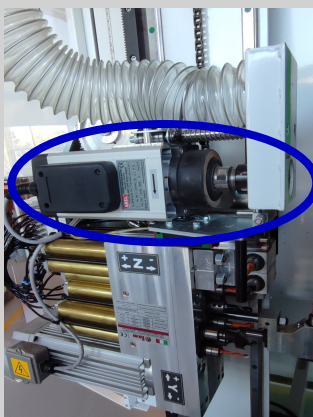
2 Drills for machining the upper and lower edge of the parts



2+2 Horizontal Drill X Axis

2 drills on each side of the machine.

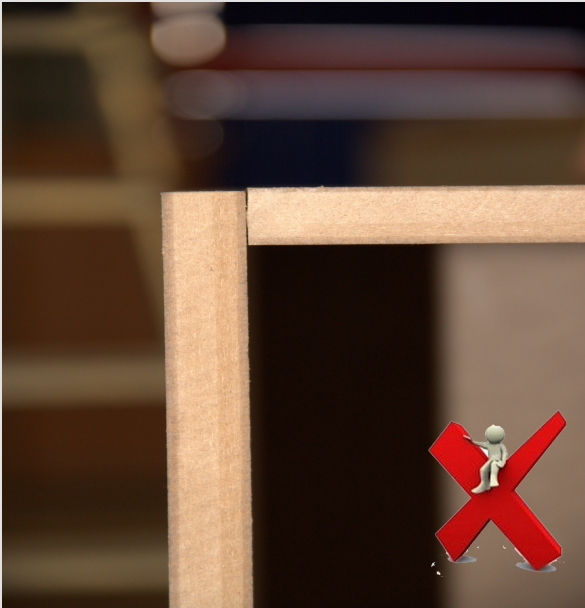
It performs machining on the right and left edges of the piece, 32mm spacing between them.



High frequency motor, 18000rpm, 3 hp, to make routing, milling, cuts, slots, decorative design, corners retails, Gola arcs, and more. It replace the saw unit to make the groove, because is faster, only one pass to finish the width of the groove using the right tool

Electronic Probe

A

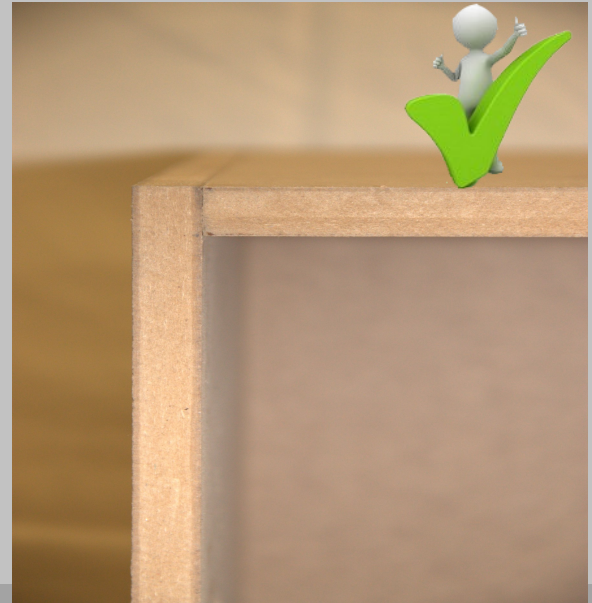
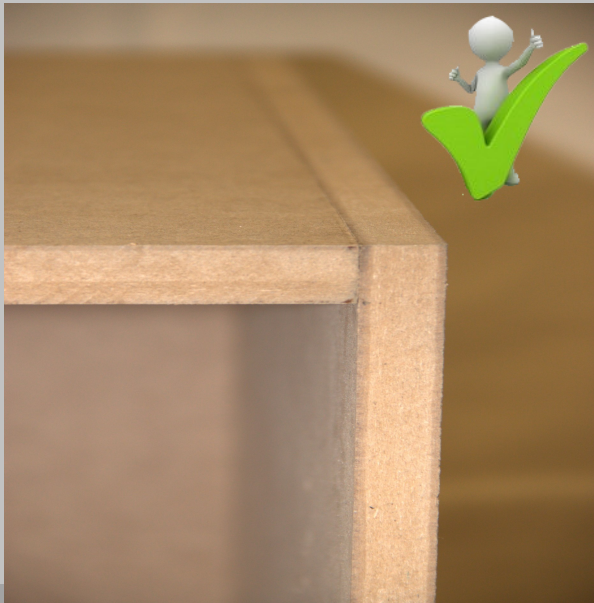


A. — Bad joints can appear by differences in panel thickness machining with drills “under table” systems.

B



B. — Bad joints produced by differences in the length and squaring of the piece (machines without Electronic squaring probe)



Perfect joints thanks to our frontal boringhead system, integrated pneumatic press on it, and our exclusive Electronic Squaring Probe Tester that corrects the position of the holes respect to the length and squaring of the part piece.

¿Why is important the Electronic probe?

We know that the majority of the craftsmen cut the panels in manual panel saws, so, as result of this, there are some imperfections in the length and the squaring of the parts.

TECHNICAL DATA

XBORE2 (dimensions in mm)	
Usefull measures work range	
AXIS Y (mm) (till nº1 drill)	814
AXIS X (mm)	3000
AXIS Z (thickness material mm)	40
MAX height for router motor	900
Speed axis Y	60mts/min
Speed for clamp: (CE normative)	25mts/min
Minimum piece size (mm)	(x)240mm,(y)60mm, (Z) 12mm
Max piece height mm(with superior pusher / no pusher)	900/960*
Required air pressure	7Kg/cm2
Packaging: (mm)	1520x800x2000
Weight kg	530
Floor space required(mm)	800x3000

Typical functions:

- Ø3-35mm drills
- Minifix drills
- hinge drills, for every market model.
- Slots with router bit in every direction
- Milling and drawings, big holes, Gola cuts for kitchens, pockets for pushers, etc.

The boring head (FAM brand, Italy)

The boring head has 5 verticals independent drills, 2 horizontal X direction, 1 Y direction at the down side.

Electronic probe to correct the square of the piece,

It has 2 functions, one is to correct the position of the holes respect to the edque of the piece, and the other is to correct the position of the holes about the large of the piece.

It works touching 4 corners of the piece, and the cnc calculate the exact position for the holes, for example 8mm holes to fit dowells. So the assembly of the furniture is perfect.

Exclusive mirrowed function, the machine works by the 2 sides. Standard configuration

TPA CNC CONTROL (Italy)

PC WINDOWS 10

Delta Servo motors TPA Cad software FAM boring head 2 hp

Boring head equipment : drills 8mm and 5mm, , 20mm , 35mm , helicoidal tool 8mm for high frequency motor,

High frequency motor, 3 hp 18000rpm Voltaje: 380v-220v Inverter (bajo consumo)

Centralized grease pump,

Electronic probe .

Remote conection (internet and wifi required in the shop)

Exclusive software to mirrowed loading to process right side pieces by the right side of the machine, and left side piece by the left side of the machine, one file = 2 pieces.

Superior pusher, handly positioning

Support arms in the 2 sides of the machines,

Lluís Dalmau 34 - Gavà 08850 - Barcelona - Tel.: +34 137 20 10 - CIF ESB63934343

Vertimaq, máquinas verticales cnc y software de diseño para carpintería S.L.

Monophasic conection system 220v.(INVERTER units inside)

CE Nonrmative



VERTIMAQ.S.L
C/ Lluís Dalmau 34
08850 Gava (Barcelona)

+34 931413108

FABRICA Y SHOWROOM
C/ Penedes 45
08880 Cubelles (Barcelona)

+34 931372010

info@vertimaq.com

www.vertimaq.com

https://www.youtube.com/user/vertimaq

https://twitter.com/vertimaq



SCAN ME

